

Low Voltage (DC)
 Brush motor Brushless motor
 Miniature screw Precision screw Machine screw
 1.0 - 3.0 mm



DLV5700 Series Non-CE



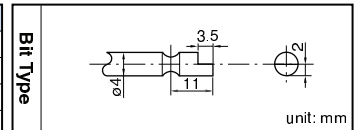
Features

For quality improvement and productivity enhancement

- Grounded bit installation mechanism
- ESD (electrostatic discharge) protection structure
- Low-shock for tightening (30 % less of standard models)
- Low swing bit mechanism
- Ergonomic design
- High-performance DC motor
- New clutch mechanism

Specifications

Model	DLV5720	DLV5720H	DLV5740	DLV5740H	DLV5750
Starting Method	Lever Start				
Input Voltage	40 V DC			36 V DC	
Torque Adjustment	Stepless				
Torque (Nm [lbf-in])	0.02 - 0.2 [0.2 - 0.18]		0.15 - 0.4 [1.3 - 3.5]		0.1 - 0.55 [0.9 - 4.9]
Free Speed (min ⁻¹)	500 - 750	700 - 1000	450 - 600	1200 - 1800	670 - 1000
Power Consumption (W)	Approx. 10			Approx. 35	
Screw Size (mm)	Machine Screw	1.0 - 2.3		1.6 - 2.6	
	Tapping Screw	1.0 - 2.0		1.4 - 2.3	
Mass (g [lbs])	230 [0.51]			300 [0.66]	
Standard Accessories	<ul style="list-style-type: none"> • Bit No.0 × 1.8 × 44 • Bit No.0 × 2.5 × 44 • Connection Cable (1.5 m)DLW9081 • Suspension Bail • Spring for Low Torque 		<ul style="list-style-type: none"> • Bit No.0 × 2.5 × 44 • Bit No.1 × 4 × 44 		<ul style="list-style-type: none"> • Connection Cable (1.5 m)DLW9081 • Suspension Bail



Model	DLC0350E	DLC0350F	DLC0350G	DLC0950E	DLC0950G
Input Voltage	100 V AC, 50/60 Hz	115 V AC, 50/60 Hz	230 V AC, 50/60 Hz	100 V AC, 50/60 Hz	230 V AC, 50/60 Hz
Plug Shape	USA 		UK 	USA 	
Mass (g [lbs])	900 [1.98]			1800 [3.97]	

Optional Accessories

Sleeve

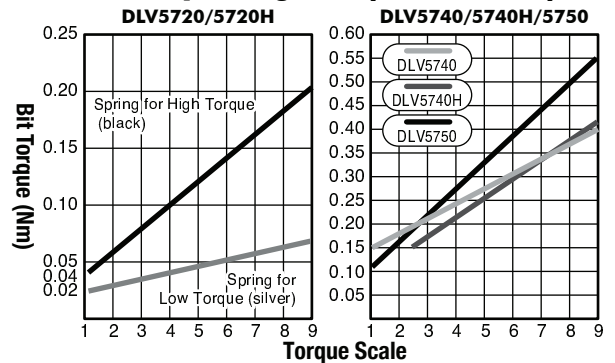
Vacuum Pickup
DLP5300 (TD04342)

Torque Adjustment Ring Cover
DLW5700 (TD02875)

This minimizes tampering or accidental turning of the torque adjustment ring once the torque is set.

* Please see page 39 for details.

Torque Diagrams (for reference)



External Dimensions

•DLV5720/5720H/5740

•DLV5740H/5750

•DLC0350

•DLC0950

unit: mm [inch]